

PARENTS CAN JOIN IN THE FUN!

Waterville Valley Elementary School supports the family. Available to parents are...

- * Weekly Communication Line
- * Monthly Morning Meeting
- * Homework Club
- * After School Recreation Program



WVES School Hike Sept., 2004

VOLUNTEERS NEEDED!

- * Join the PTA
- * Chaperoning Field Trips
- * School Newspaper
- * Community Clean-Up
- * Work in the Classrooms
- * Cooking Activities
- * Volunteer for PE Program (biking, skating, skiing & swimming)

THE ARTS THRIVE!

All students have weekly general music and art classes. In addition, many enrichment opportunities are available...

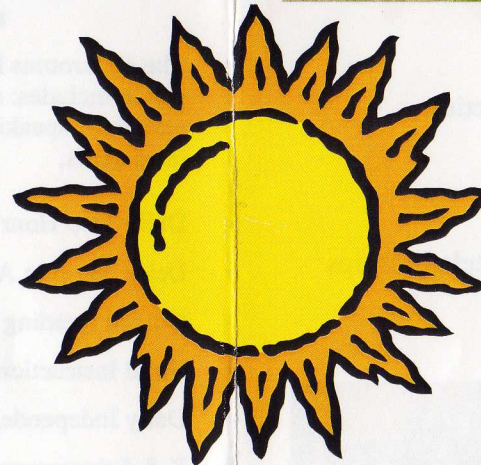
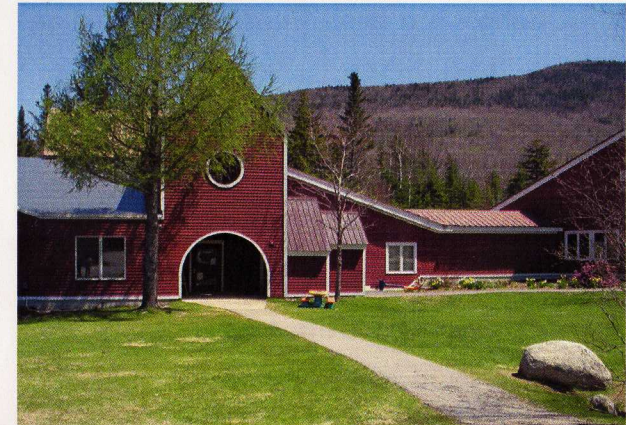
- * Friends of the Arts
- * Concerts
- * Performances
- * Instrumental Lessons/ Band (Grades 4-8)
- * Artists in the School
- * PSU Educational Theatre Collaborative (ETC)
- * SAU Cultural Arts Night
- * Lakes Region Honors Band
- * Field Trips

SPORTS OPPORTUNITIES

- * Students in grades 6-8 can join teams in the SAU and participate in their sports program: field hockey, soccer, baseball, football, and basketball.
- * Interested K-5 students can contact the WVRD for other sports activities.
- * Ski Racers interested in competing should contact the BBTS Ski Club

PAMPHLET DESIGN BY JUDY MCCHESEY

WELCOME!



*To the Waterville Valley
K-8 Elementary School
Gail Hannigan, Principal*

1 Noon Peak Road, Waterville Valley

603-236-4700

www.waterville-valley.sau48.k12.nh.us

Let Happiness Grow In a Multi-Age Classroom!

* The Waterville Valley Elementary School is a small K-8 school located in a rural resort area in the White Mountains of New Hampshire. Due to its small population the students are grouped into three multi-age classrooms. In this unique environment children flourish! Advantages of the K-8 multi-age setting are...

- * Small Class Sizes
- * Individualized Instruction
- * Assessment Driven Instruction
- * Flexible Grouping
- * Peer Tutoring
- * Strong Student -Teacher Relationships



K-2 Class performing the play, "The Boy Who Cried Wolf".

Literacy is Blooming!

- * The classrooms have a Balanced Literacy Approach which includes: reading, writing, word study (K-2 phonics), speaking and listening activities and related skills.
- * Daily Two Hour Literacy Block
- * Daily Writing Across the Curriculum
- * Guided Reading Instruction
- * Basal Instruction (Grades 1-5)
- * Daily Independent Reading
- * K-8 Assessments/Literacy Benchmarks
- * Genre Studies (Classics –Contemporary)
- * Published Student Writing
- * I Love To Read Month
- * Author Visits

PAMPHLET DESIGN BY JUDY MCCHESENEY

Pancakes! Pancakes!

The K-2 Class visited Benton's Sugar Shack in Thornton, NH. They learned how maple syrup was produced long ago and today. In preparation for the trip we read, *Sugaring Time* which told the story of a family run maple sugar farm similar to Benton's.

Back at school the K-2 students and parents prepared a pancake breakfast for the students and staff. Pancakes were served with fresh maple syrup from Benton's Sugar Shack!

Related

Literature:

- * *If You Give A Pig A Pancake* by Laura Numeroff
- * *Pancakes, Pancakes!* by Eric Carle

Field trips at WVES provide enrichment and extended learning opportunities that are related to curriculum. Traditional trips include: NH State House, NH History Museum, Boston Freedom Trail, Boston Museums, Squam Lakes Natural Science Center, Sea Coast Science Center, Christa McAuliffe Planetarium, and Montshire Museum.

